

Cumberland Jr.

GRADDS

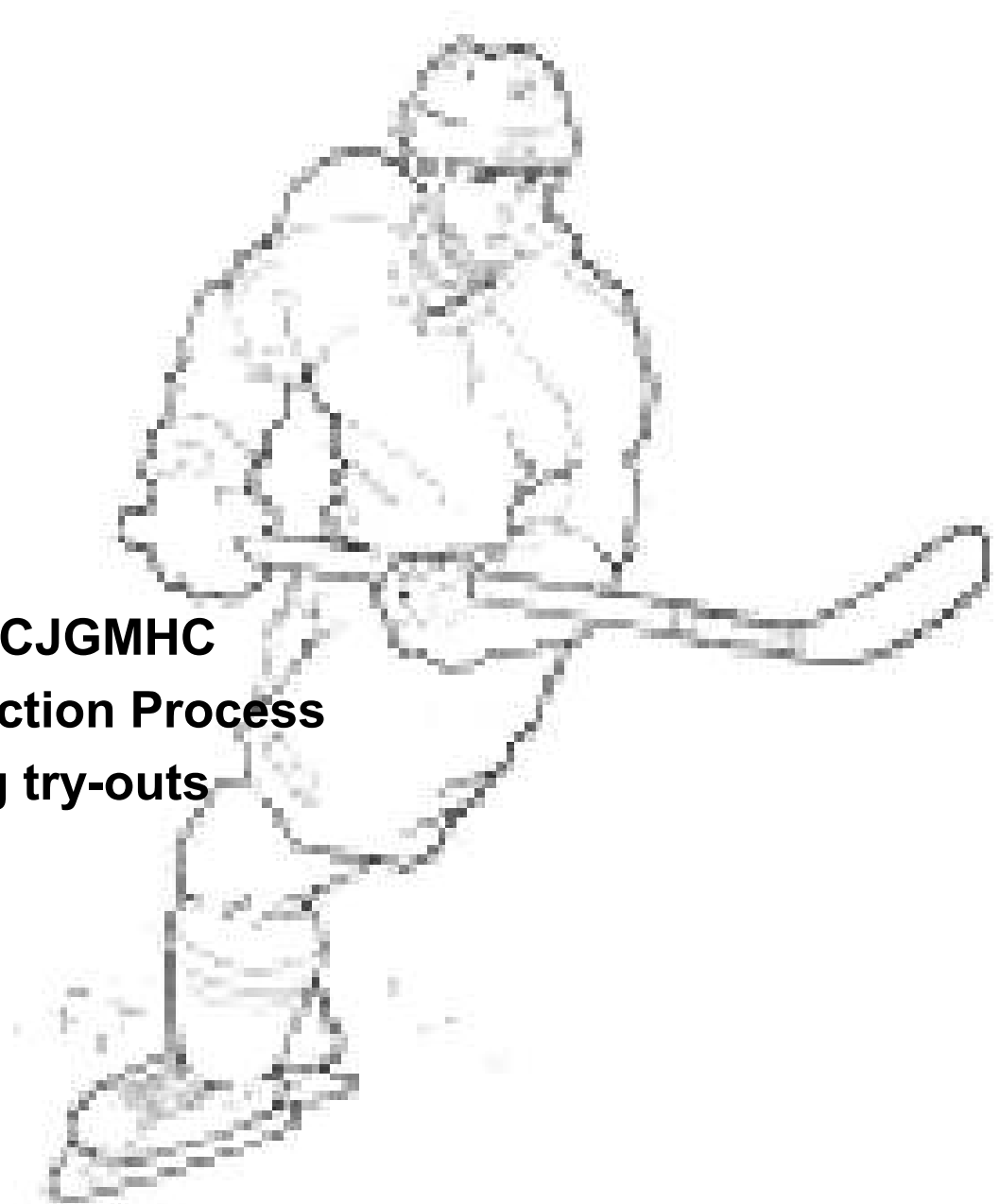
Hockey

*Parent Information Meeting
August 27, 2009*



Agenda

1. **Welcome / Introduction**
2. **Who are the CJGMHC**
3. **The Differences: CMHA vs CJGMHC**
4. **Player Evaluation and Selection Process**
5. **Things to remember during try-outs**
6. **Time Commitment**
7. **Financial Commitment**
8. **Closing Comments**
9. **Questions**



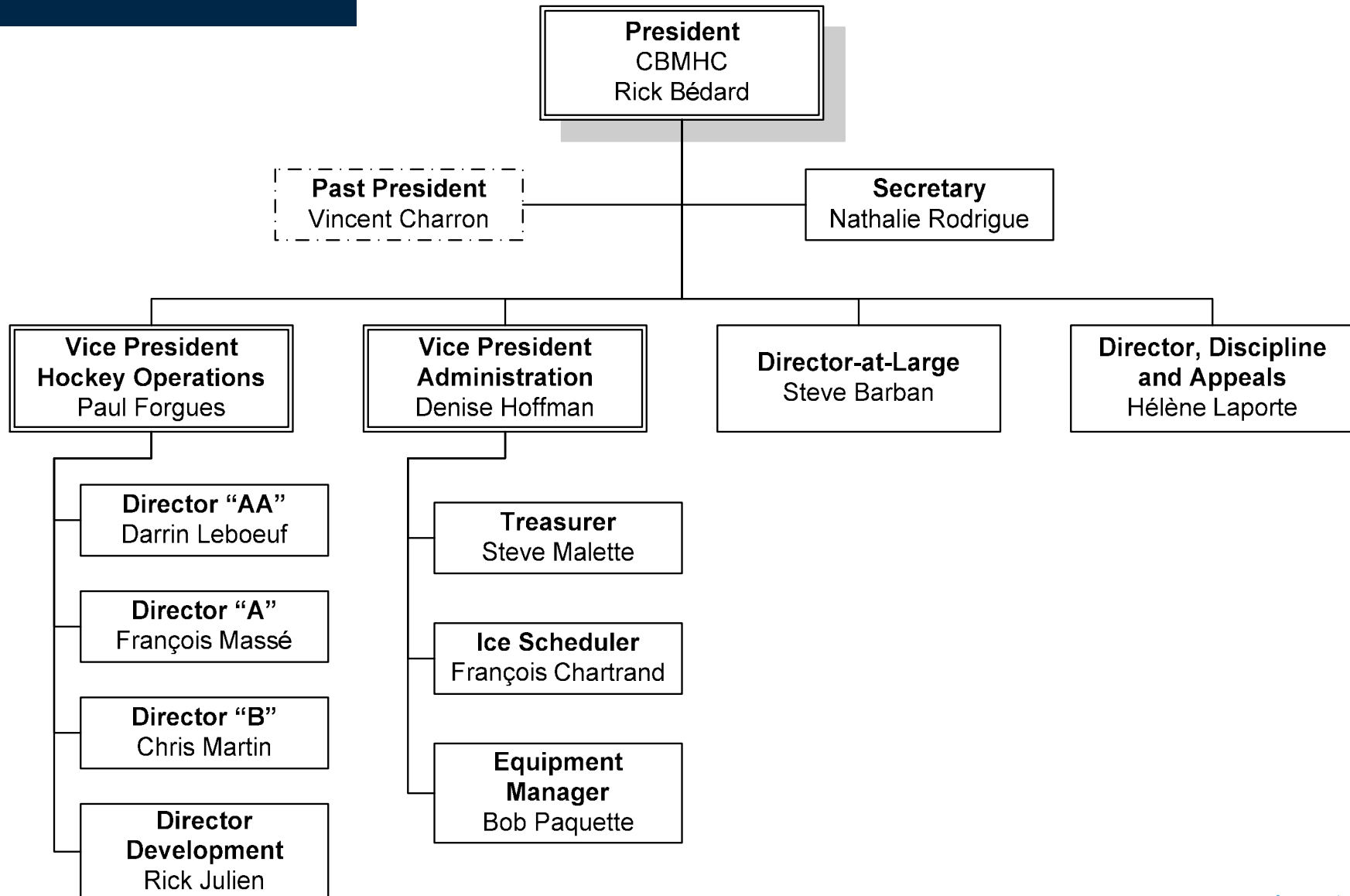


Welcome / Introduction



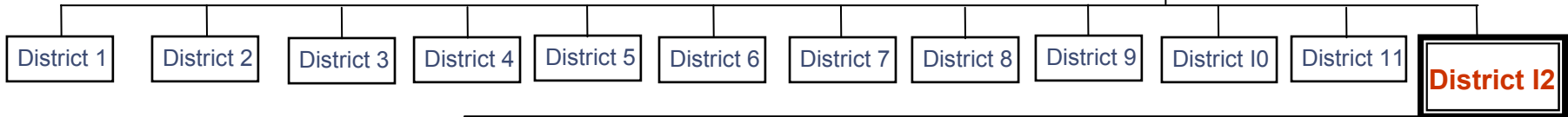


Who are the Cumberland Jr. Grads Minor Hockey Club





Who are the CJGMHC?





Competitive: AA, A & B
340 Players



House League: A, B & C
1,400 Players



The Differences

		
Fun	Yes	Yes
Competitive/Entertaining	Yes	Yes
Tournaments	Yes	Yes
Body Checking	None at any level	Peewee & above
Out of Town Travel	Possibly	Yes
Fundraising	Possibly	Possibly
Ice Time	Equal Ice	Fair Ice
Players	1,400 (80%)	340 (20%)

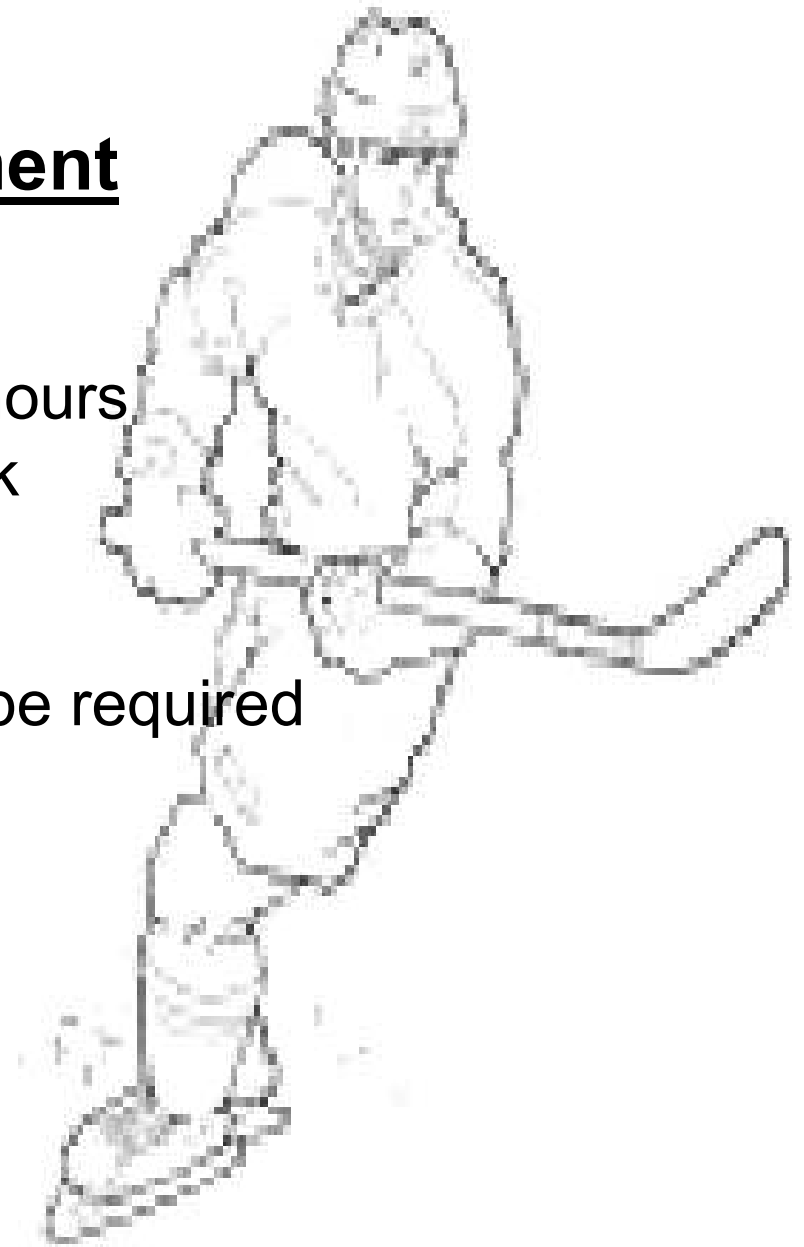
Financial Commitment

- Blue helmets, pants, equipment bags & warm-suits with mock neck or shirt & tie are mandatory.
- Team budgets are approximately \$27K.
- Additional personal contribution towards team costs \$1,000 - \$1,200, subject to fundraising activities.
- Out of town tournament costs: hotel & meals – approx. \$500 - \$750 per tournament.



Time Commitment

- Projected hours of ice time > 100 hours
- Off ice team training – 1 Time/week
- Average of 3-5 times/week
- 4-5 tournaments
- Out of town tournament travel will be required
(e.g., Sudbury (Silver Stick), GTA)
- Holiday Season – Bell Capital Cup
- Fundraising participation





Closing Comments

- Remember, hockey is just a game!
- Do not live your hockey aspirations through your child
- Be fully supportive of your child wherever he/she plays – CMHA or CJGMHC
- Do not form bad habits:
 - Payment for goals
 - Coach killer
 - Referee harassment
 - Do not coach to and from the rink
- Form good habits
 - Positive cheering for all players
 - Be part of the solution not the problem. If you are not part of the solution, you become the problem and you will become alienated.
- Get involved – volunteer





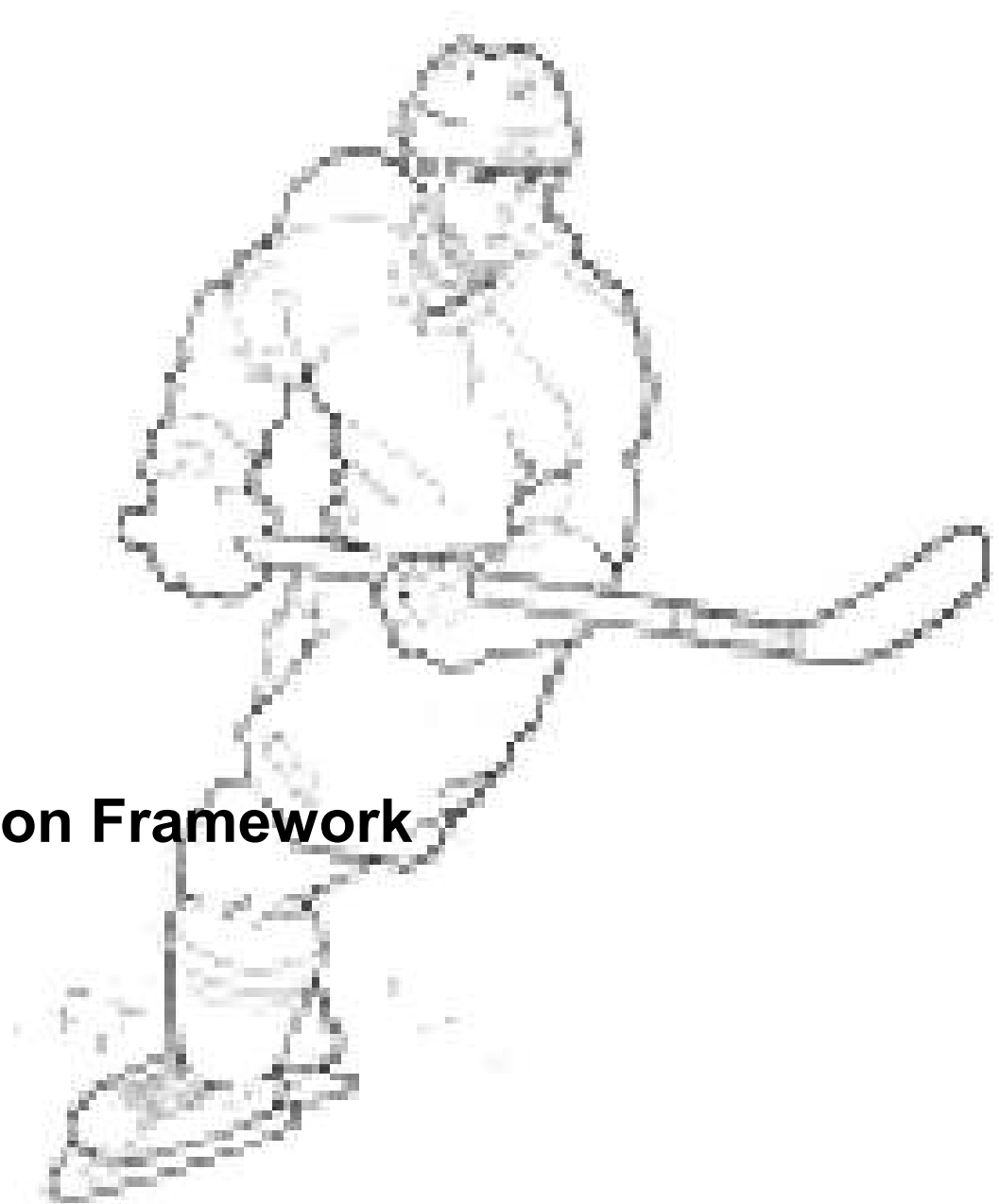
Questions / Comments





Part 2:

Coach and Player Evaluation Framework





Coach and Player Evaluation Framework

Matt Ebbs, Canadian Centre for Ethics in Sports.

- Background of the Framework.



Coach and Player Evaluation Framework

Paul Forgues, Cumberland Jr. Grads Minor Hockey Club.

- Coach Selection Committee
 - Coach selection – Outcome
- Player Selection Committee
 - Player evaluation process – Status



Coach Selection - Outcome

Level	Coaches	Level	Coaches
Minor Atom	Chris Herman Marc Leger Kirk Als	Major Atom	Marc Franche Paul Rodrigue Michel Fennessy Martin Boucher
Minor Peewee	Mike Carter Rodrigue (Chico) Diotte Steve Gillis Serge Chicoine Marc Doucette	Major Peewee	Rob Murray Steve Barban Daniel Neault
Minor Bantam	Chris Kealey Shawn Evraire	Major Bantam	Nick Baxter Sylvain Plourde
Minor Midget	Steve Malette Brian Murray Gerry Savage	Major Midget	Bob Paquette Len Bourdeau



Coach and Player Evaluation Framework

413 registered players (as of August 25th)

- Minor Atom (2000) 49 with 8 goalies included
- Major Atom (1999) 58 with 7 goalies included
- Minor Peewee (1998) 62 with 10 goalies included
- Major Peewee (1997) 59 with 9 goalies included
- Minor Bantam (1996) 52 with 12 goalies included
- Major Bantam (1995) 38 with 5 goalies included
- Minor Midget (1994) 45 with 5 goalies included
- Major Midget (1993) 33 with 5 goalies included
- Major Midget (1992) 17 with 4 goalies included



Coach and Player Evaluation Framework

- **Players Selection Committee**
 - Tryouts: Player evaluation (drills & scrimmages).
 - Coaches & Independent Evaluators (audit/validate).
 - Goalie Evaluators (goalie evaluation group).
 - Player release process.
 - Review day for parents & players.



Things to remember for try-outs

- Please arrive one (1) hour before try-out session.
- Every player must bring their own water bottle and have it clearly identified – trainers will not have any and players need to stay hydrated.
- Hand sanitizer will be available for the players and at registration tables.
- No parents are allowed in the dressing room area – there will be volunteers on-hand to help the players should they need it.
- Keep checking your e-mail/website for changes to try-out schedule and assignment of ice times.



Questions / Comments

